



Innovating Epigenetic Solutions

Continuous Valve

for Bioruptor® Water Cooler

Installation Guide

Contents

Introduction	4
Warnings	4
Guarantee	4
Intended use of the equipment	4
Equipment Components	5
Global Scheme	6
Environmental Conditions	6
Equipment installation	7
Technical assistance	10

Introduction

Warnings

These instructions cannot claim to cover all details of possible equipment variations, nor in particular can they provide for every possible example of installation or operation.

Trouble-free and safe operation of the unit is dependent on proper transport and installation by qualified personnel.

Guarantee

Limited one year global warranty.

Diagenode guarantees its products against possible manufacturing defects in material and workmanship. Diagenode products are rigorously tested to ensure that the products you trust meet stringent standards. Consequently, if a problem occurs with a Diagenode product and the problem is caused by manufacturing defects in material and workmanship, Diagenode will, in its discretion, either fix or replace the product in accordance with the warranty terms and conditions stated herein. The warranty applies only to **the first purchaser of the product for a period of one year starting from the date this product was delivered.**

In case of repair or replacement on a product under warranty, expenses will be at Diagenode's charge, including any costs required to return the repaired or replacement product to you.

This warranty covers only manufacturing defects and does not cover any damage caused by misuse (non-respect of recommendations described in this manual), neglect, accidents, abrasion, exposure to extreme temperatures, solvents, acids.

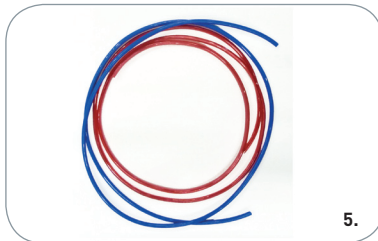
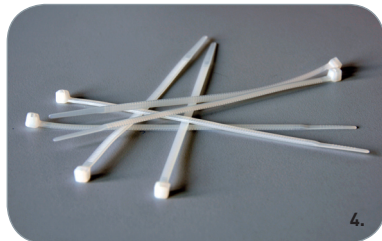
Intended use of the equipment

The **Continuous Valve for Bioruptor®** as well as all components from this parcel, including plastic tubings and strips must be used as a junction between the Bioruptor® Water Cooler and a Bioruptor® Standard (UCD-200) an a Bioruptor® XL (UCD-500).

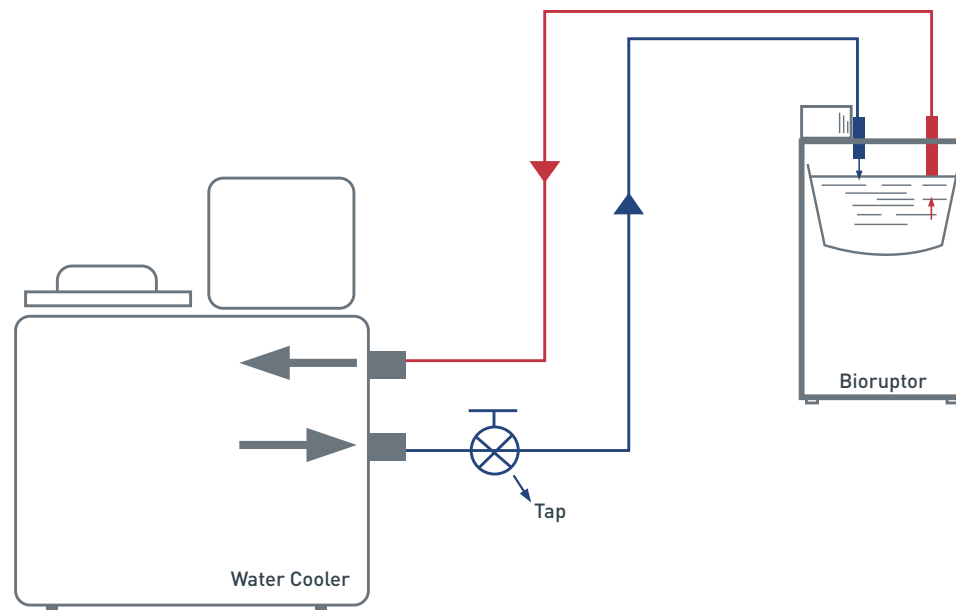
This equipment is designed to be used in the above described application only. Any medical application is out of scope.

Equipment Components

	Component	Quantity
1	Plastic Connector for motor lid	2
2	Tap	1
3	Male Nozzle Connector	1
4	Tie Wraps	10
5	Tubing blue and red	2 x 2 m
6	Cutting Device	1
7	Open-end wrench N° 14	1
8	Plumbing Teflon	1



Global scheme



Environmental Conditions

Devices are designed to be safe under the following conditions:

- Indoor use
- Altitude up to 2 000 m
- Operating external temperature 0 °C to 40 °C
- Fluid temperature 4°C to 50°C
- Maximum relative humidity 80 % for temperatures up to 31 °C decreasing linearly to 50 % relative humidity at 40 °C, without condensation
- MAINS supply voltage from 100V AC to 230V AC with fluctuations up to ± 10 % of the nominal voltage
- Transient overvoltages typically present on the MAINS supply
- Degree of protection: IP20
- POLLUTION DEGREE 2 (Normally only non-conductive POLLUTION occurs. Occasionally, however, a temporary conductivity caused by condensation is expected)

Warning:



Never use in atmosphere with flammable gas.
Never use in any location where there is a possibility of extreme dust.
Environment exempt from sunlight is required.

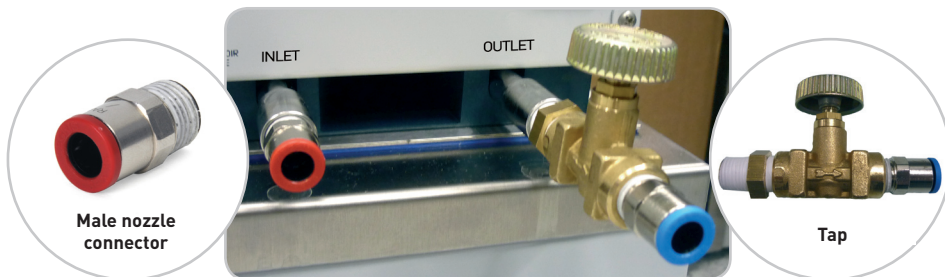
Equipment installation

Before starting installation work, turn the main switch off (beyond power connection) and secure the unit against being re-energized.

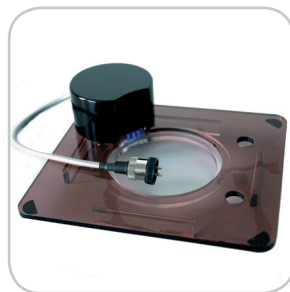


Location Requirements:

Location Requirements: The Bioruptor® Water Cooler must be located underneath the Bioruptor® water bath. Never install this equipment in a place where Environmental Conditions mentioned above are infringed.



1. Unpack the Bioruptor® Water Cooler and remove the black protection rubber which connects inlet and outlet.
2. Place the tap valve and the male nozzle connector on the outlet and inlet as shown above. Use an open-end wrench N° 14. Seal each thread by adding Plumbing Teflon (**Note:** Red connector and red tubing will ensure the waterflow from the water bath to the Bioruptor® Water Cooler. Blue connector and blue tubing will ensure the waterflow from the Bioruptor® Water Cooler to the water bath).



3. Place the two black plastic connectors on the motorized lid. The connectors can be placed into one or the other hole of the motorized lid.

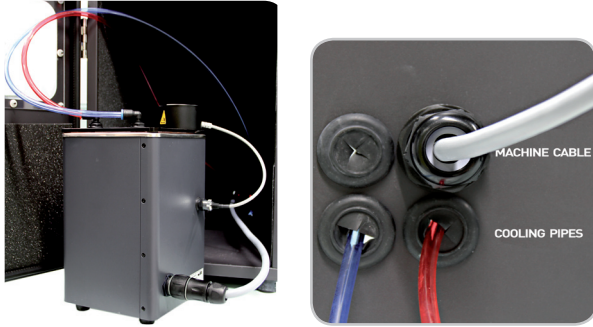
Screw the plastic nut over the motorized lid. The short red and blue pieces of tubing have to be inserted in the plastic connectors.



IMPORTANT NOTE:

If you need to cut a part of the tubing, always use the provided Cutting Device. Never use scissors because pieces of tubing with bad cuts generate leaks at junctions. Only properly cut tubes can be inserted in the connectors.

The length determines the water level in the sonication bath. After installation, if the water level is not correct, use the Spare Tubing and cut it at the right length (The suction pipe (red pipe) must be set at the same level as the water level sticker is).



4. Position the water bath in front of the soundproof box upon the final site. Connect the Bioruptor® water bath to the Bioruptor® Water Cooler with the red and blue tubes by inserting them in the appropriate connectors.

Optional: Cut the length you need for the output and input flow. Make sure there is enough slack. The red and blue tubes must go through the soundproof box holes before being connected to the motorized lid (see picture).



5. Fill the tank of the circulator with 4.5 litres of water. Distilled water should be used in order to minimize the proliferation of bacteria.

Press Power button on the back side of the device.

Press Power button on the front side of the device.

Temperature can be set by pushing and turning the knob on the first side of the device.

6. Unscrew the tap to allow the circulation of a moderate flow of water.

IMPORTANT NOTE:

The correct flow is 0.5 liter per minute (that has to be determined manually).

Instruction for use

The valve balancer is automatically controlled by the Bioruptor®. No special management is requested.

As soon as the Bioruptor® and Bioruptor® Water Cooler are turned on, the water flow starts. The Bioruptor® automatically closes the valve while sonication treatment is on. This design prevents the sonication treatment from any interference that would be generated by the water flow.

Technical Assistance & Ordering Information

Diagenode s.a. BELGIUM | EUROPE

Avenue de l'hôpital, 1
Tour GIGA, 3rd Floor
4000 Liège - Belgium
Tel: +32 4 364 20 50
Fax: +32 4 364 20 51
techsupport@diagenode.com
orders@diagenode.com

Diagenode Inc. USA | NORTH AMERICA

400 Morris Avenue, Suite #101
Denville, NJ 07834 - USA
Tel: +1 862 209-4680
Fax: +1 862 209-4681
techsupport.na@diagenode.com
orders.na@diagenode.com

For a complete listing of Diagenode's international distributors, visit: <http://www.diagenode.com/pages/distributors.html>
For the rest of the world, please contact Diagenode s.a.

Ordering information

Description	Cat. No.
Cooling System	
Single Cycle Valve for Bioruptor® Water Cooler (Bioruptor® Plus & NGS)	VB-100-0001
Dual Cycle Valve for Bioruptor® Water Cooler (Bioruptor® Twin)	VB-101-0001
Bioruptor® Water Cooler including continuous valve for Bioruptor®	BioAcc-cool
Bioruptor®	
Bioruptor® Standard	UCD-200 TM (1.5 ml) UCD-200 TO (1.5 ml & 15 ml) UCD-200 TS (0.5/0.65 ml)
Bioruptor® Plus	UCD-300 TM (1.5 ml) UCD-300 TO (1.5 ml & 15 ml) UCD-300 TS (0.5/0.65 ml)
Bioruptor® Twin	UCD-400 TM (1.5 ml) UCD-400 TO (1.5 ml & 15 ml)
Bioruptor® XL	UCD-500 TM (1.5 ml) UCD-500 TO (1.5 ml & 15 ml)
Bioruptor® NGS	UCD-600 TS (0.5/0.65 ml)



Innovating Epigenetic Solutions

Diagenode s.a. BELGIUM | EUROPE

Avenue de l'hôpital, 1
Tour GIGA, 3rd Floor
4000 Liège, Belgium
Tel: +32 4 364 20 50
Fax: +32 4 364 20 51
orders@diagenode.com
info@diagenode.com

Diagenode Inc. USA | NORTH AMERICA

400 Morris Avenue, Suite 101
Denville, NJ 07834 USA
Tel: +1 862 209-4680
Fax: +1 862 209-4681
orders.na@diagenode.com
info.na@diagenode.com

For a complete listing of Diagenode's
international distributors visit:
<http://www.diagenode.com/pages/distributors.html>
For rest of the world, please contact Diagenode s.a.