

TET3 polyclonal antibody - Pioneer

Cat. No. C15410311

Type: Polyclonal

Source: Rabbit

Lot #: A2307P

Size: 50 µg /50 µl

Concentration: 1 µg/µl

Specificity: Human: positive / Other species: not tested

Purity: Affinity purified polyclonal antibody in PBS containing 0.05% azide and 0.05% ProClin 300

Storage: Store at -20°C; for long storage, store at -80°C
Avoid multiple freeze-thaw cycles

Precautions: This product is for research use only
Not for use in diagnostic or therapeutic procedures

Description : Polyclonal antibody raised in rabbit against TET3 (Tet Methylcytosine Dioxygenase 3), using 4 KLH-conjugated synthetic peptides containing sequences from different parts of the protein.

Applications

	Suggested dilution/amount	Results
ELISA	1:1,000	Fig 1
WB	1:1,000	Fig 2, 3

Target description

TET3 (UniProtKB/Swiss-Prot entry O43151) is a member of the ten-eleven translocation (TET) gene family which play a role in the DNA methylation process. It catalyzes the conversion of the modified genomic base 5-methylcytosine (5mC) into 5-hydroxymethylcytosine (5hmC) which is the first step in demethylation of the DNA. TET3 may therefore play an important role in gene activation and plays a key role in epigenetic chromatin reprogramming in the zygote following fertilization. Diseases associated with TET3 include acute myeloid leukemia.

Results

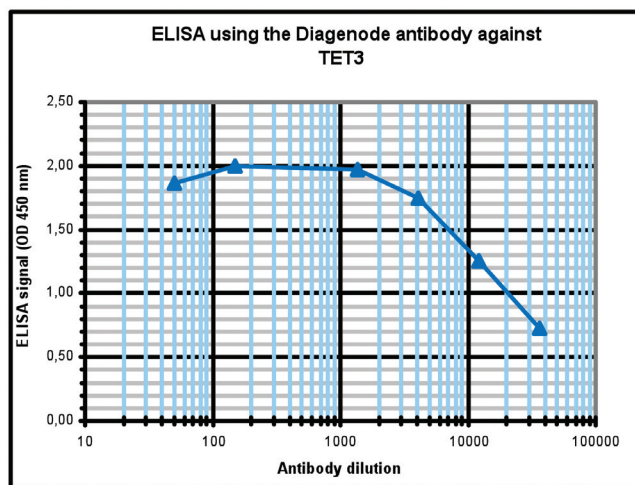


Figure 1. Determination of the antibody titer

To determine the titer of the antibody, an ELISA was performed using a serial dilution of Diagenode antibody directed against mouse TET3 (cat. No. C15410311). The plates were coated with the peptides used for immunization of the rabbit. By plotting the absorbance against the antibody dilution (Figure 2), the titer of the antibody was estimated to be 1:20,300.

Figure 2. Western blot analysis using the Diagenode antibody directed against TET3

Whole cell extracts (25 µg) from Jurkat cells were analysed by Western blot using the Diagenode antibody against TET3 (cat. No. C15410311) diluted 1:1,000 in TBS-Tween containing 5% skimmed milk. The position of the protein of interest is indicated on the right; the marker (in kDa) is shown on the left.

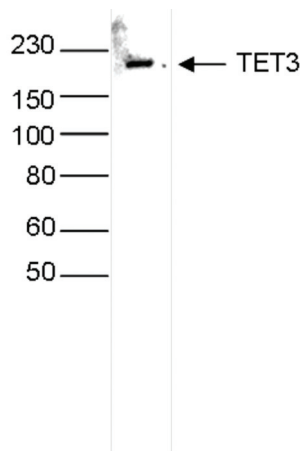
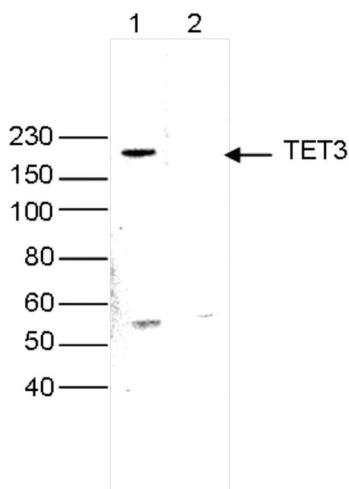


Figure 3. Western blot analysis using the Diagenode antibody directed against TET3

Whole cell extracts (25 µg) from Jurkat cells were analysed by Western blot using the Diagenode antibody against TET3 (cat. No. C15410311) diluted 1:200 in TBS-Tween containing 5% skimmed milk. Lane 2 shows the results after incubation of the antibody with the immunizing peptides. The position of the protein of interest is indicated on the right; the marker (in kDa) is shown on the left.