

H3R2me2sT3p polyclonal antibody - Classic

Cat. No. C15410303

Type: Polyclonal

Source: Rabbit

Lot #: 001

Size: 50 µg

Concentration: 0.21 µg/µl

Specificity: Human

Purity: Affinity purified

Storage: Store at -20°C; for long storage, store at -80°C.
Avoid multiple freeze-thaw cycles.

Precautions: This product is for research use only. Not for use in diagnostic or therapeutic procedures.

Applications

	Suggested dilution	Results
IF	1:50-1:100	Figure 1
Western blot	1 µg/mL	Figure 2
Dot blot	1:1,000	Figure 3

Target description

Chromatin is the arrangement of DNA and proteins in which chromosomes are formed. Correspondingly, chromatin is formed from nucleosomes, which are comprised of a set of four histone proteins (H2A, H2B, H3, H4) wrapped with DNA. Chromatin is a very dynamic structure in which numerous post-translational modifications work together to activate or repress the availability of DNA to be copied, transcribed, or repaired. These marks decide which DNA will be open and commonly active (euchromatin) or tightly wound to prevent access and activation (heterochromatin). Common histone modifications include methylation of lysine and arginine, acetylation of lysine, phosphorylation of threonine and serine, and sumoylation, biotinylation, and ubiquitylation of lysine. In particular phosphorylation of threonine 3 (H3T3p) is a known mark of mitosis. Recent findings also demonstrate that pT3 can promote binding of survivin in the nucleosome.

Results

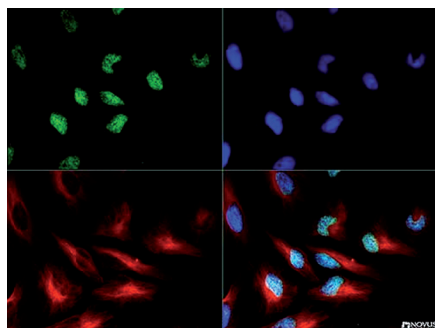


Figure 1. H3R2me2sT3p Immunofluorescence results

Immunofluorescence of H3R2me2sT3p. The H3R2me2sT3p antibody was tested at a 1:50 dilution in HeLa cells with FITC (green). Nuclei were counterstained with DAPI (blue).

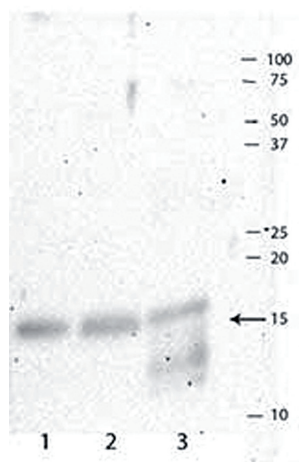


Figure 2. H3R2me2sT3p Western blot results

Western Blot of H3R2me2sT3p antibody. Western Blot analysis against untreated cell extracts. Lane 1: HeLa cell lysates. Lane 2: NIH/3T3 cell lysates. Lane 3: Cos 7 cell lysates. Load: 35 µg per lane. Primary antibody used at 1 µg/mL overnight at 4°C. Secondary antibody: IRDye800™ rabbit secondary antibody at 1:10,000 for 45 min at RT. Predicted/Observed size: 15 kDa. Other band(s): non-specific.

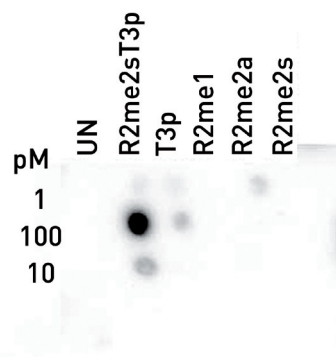


Figure 3. H3R2me2sT3p Dot blot results

Dot Blot of H3R2me2sT3p antibody. Lane 1: Unmodified. Lane 2: R2me2s. Lane 3: T3p. Lane 4: R2me1. Lane 5: R2me2a. Lane 6: R2me2s. Load: 1, 10, and 100 picomoles of peptide. Primary antibody used at 1:1,000 for 45 min at 4°C. Secondary antibody: RABBIT IgG (H&L) Secondary Antibody Peroxidase Conjugated Pre-adsorbed at 1:40,000 for 30 min at RT.