

## CHAMP1 polyclonal antibody

**Other names:** ZNF828, CAMP, CHAMP, C13orf8

**Cat. No.** C15310250 (CS-PA050-100)

**Type:** Polyclonal

**Source:** Rabbit

**Lot #:** A1018-001

**Size:** 100 µl

**Concentration:** not determined

**Specificity:** Human: positive / Other species: not tested

**Purity:** Whole antiserum from rabbit containing 0.05% azide.

**Storage:** Store at -20°C; for long storage, store at -80°C.  
Avoid multiple freeze-thaw cycles.

**Precautions:** This product is for research use only. Not for use in diagnostic or therapeutic procedures.

**Description:** Polyclonal antibody raised in rabbit against human CHAMP1 (chromosome alignment maintaining phosphoprotein 1) using two KLH-conjugated synthetic peptides containing a sequence from the central region of the protein.

### Applications

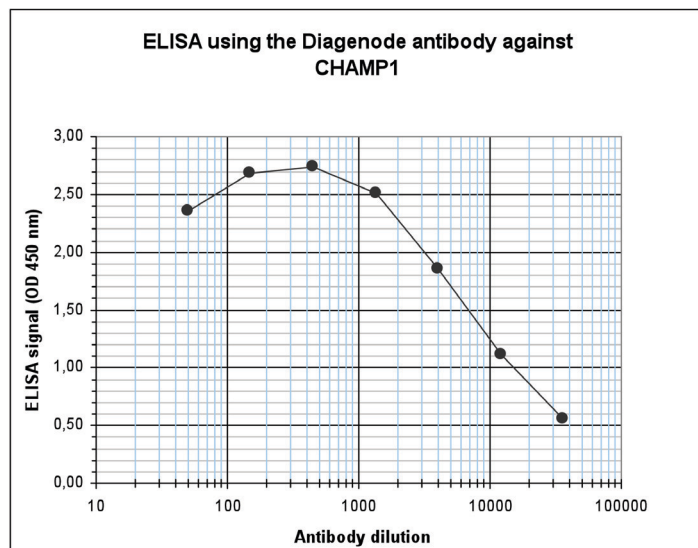
	Suggested dilution	Results
ELISA	1:500	Fig 1

\*The optimal dilution for other applications should be determined by the end user. For WB we suggest starting with a 1:1,000 dilution

### Target description

CHAMP1 (UniProtKB/Swiss-Prot entry Q96JM3) is required for proper alignment of chromosomes at metaphase and their accurate segregation during mitosis. It is involved in the maintenance of spindle microtubules attachment to the kinetochore during sister chromatid biorientation.

## Results



**Figure 1. Determination of the antibody titer**

To determine the titer of the antibody, an ELISA was performed using a serial dilution of the Diagenode antibody directed against human CHAMP1 (cat. No. CS-PA050-100). The plates were coated with the peptides used for immunization of the rabbit. By plotting the absorbance against the antibody dilution (Figure 1), the titer of the antibody was estimated to be 1:8,500.

### **Diagenode sa. BELGIUM | EUROPE**

LIEGE SCIENCE PARK  
Rue Bois Saint-Jean, 3  
4102 Seraing (Ougrée) - Belgium  
Tel: +32 4 364 20 50  
Fax: +32 4 364 20 51  
orders@diagenode.com  
info@diagenode.com

### **Diagenode Inc. USA | NORTH AMERICA**

400 Morris Avenue, Suite 101  
Denville, NJ 07834 - USA  
Tel: +1 862 209-4680  
Fax: +1 862 209-4681  
orders.na@diagenode.com  
info.na@diagenode.com

**Last update:** September 5, 2012